

# MONTHLY MEMBERSHIP PROGRESS REPORT

LOCATION ARIZONA

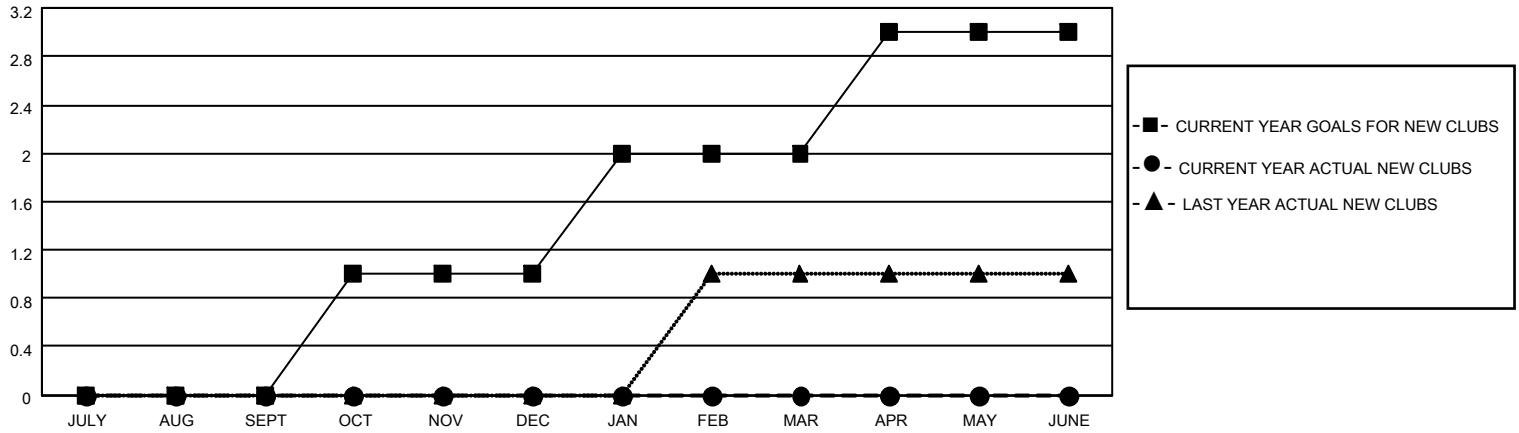
District 21 S

Results as of: 4/30/2022

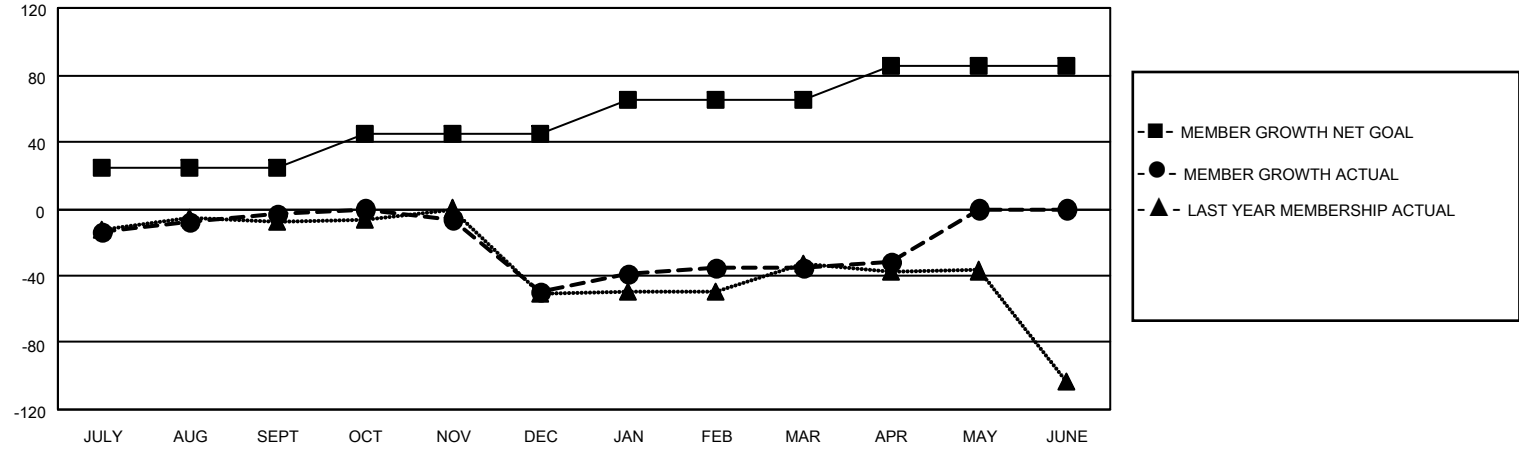
Clubs			
RESULTS FOR 2021-2022			
QUARTER	NEW CLUB GOAL	NEW CLUBS	DROPPED CLUBS
JULY/AUG/SEPT	0	0	0
OCT/NOV/DEC	1	0	2
JAN/FEB/MAR	1	0	1
APR/MAY/JUNE	1	0	0

Members			
RESULTS FOR 2021-2022			
QUARTER	MEMBER GROWTH NET GOAL	MEMBER GROWTH ACTUAL	DROPPED MEMBERS ACTUAL (including transfers)
JULY/AUG/SEPT	25	55	39
OCT/NOV/DEC	20	65	98
JAN/FEB/MAR	20	44	20
APR/MAY/JUNE	20	11	6

**GOALS AND ACTUAL NEW CLUBS CUMULATIVE**



**GOALS AND ACTUAL MEMBERS CUMULATIVE**



**DROPPED CLUBS: 3**

**33 CLUBS OF 51 ADDED 1 OR MORE NEW MEMBERS**

**GENDER DISTRIBUTION**

MALE	596 (52.28%)
FEMALE	544 (47.72%)
NON BINARY	0 (0.00%)
PREFER NOT TO ANSWER	0 (0.00%)

**DROPPED MEMBERS**

[CLICK HERE FOR CUMULATIVE MEMBERSHIP DATA](#)

DECEASED	24
CLUB CANCELLED	18
OTHER	121
<b>TOTAL</b>	<b>163</b>

TOTAL FAMILY UNIT MEMBERS	268
FAMILY MEMBERS PAYING HALF DUES	136